

SilkyEvCam Update procedure
for **METAVISION 2.3**
Nov.2021

ubuntu :P.2~P.5
windows :P.6~P.9

Dated: 2021/11/11 Rev.1

Home Page <http://www.centuryarks.com/>

File name : SilkyEvCamUpdaterPack_ubuntu_20211111.zip

It includes,

- readme.txt
- SilkyEvCam plugin installer (SilkyEvCam_G31_Installer_for_ubuntu_v2.6.0.zip)
- SilkyEvCam FW updater (SilkyEvCam_FW_Updater_for_ubuntu_v2.2.0.zip)
- SilkyEvCam FPGA updater (SilkyEvCam_FPGA_Updater_for_ubuntu_v4.2.0.zip)

Update procedure. Follow the step below.

Step1. SilkyEvCam plugin installer v2.6.0

Step2. SilkyEvCam FW updater v2.2.0

Step3. SilkyEvCam FPGA updater v4.2.0

Compliance items

- Perform all 3 steps.
- Please execute the process with the AC power supply connected to the PC.
- While the program is running (while writing the firmware), do not unplug the SilkyEvCam USB plug or stop the power supply.

The detailed procedure is described on the following pages.

Step1. SilkyEvCam plugin installer v2.6.0

There is no need to connect the camera to your PC.

Please the following processing on the terminal of the PC.

```
$> unzip SilkyEvCam_G31_Installer_for_ubuntu_v2.6.0.zip [Enter]
$> cd SilkyEvCam_G31_Installer_for_ubuntu_v2.6.0 [Enter]
$> chmod +x CA_Silky_installer.sh [Enter]
$> ./CA_Silky_installer.sh [Enter]
```

Step2. SilkyEvCam FW updater v2.2.0

Please the following processing on the terminal of the PC.

```
$> unzip SilkyEvCam_FW_Updater_for_ubuntu_v2.2.0.zip [Enter]
$> cd SilkyEvCam_FW_Updater_for_ubuntu_v2.2.0 [Enter]
$> chmod +x SilkyEvCam_FW_Updater.sh [Enter]
```

Connect the camera and PC with a USB cable.

Please the following processing on the terminal of the PC.

```
$> ./SilkyEvCam_FW_Updater.sh [Enter]
```

After the command prompt returns, unplug the camera's USB plug.

Step3. SilkyEvCam FPGA updater v4.2.0

Please the following processing on the terminal of the PC.

```
$> unzip SilkyEvCam_FPGA_Updater_for_ubuntu_v4.2.0.zip [Enter]
$> cd SilkyEvCam_FPGA_Updater_for_ubuntu_v4.2.0 [Enter]
$> chmod +x SilkyEvCam_FPGA_Updater.sh [Enter]
```

Connect the camera and PC with a USB cable.

Please the following processing on the terminal of the PC.

```
$> ./SilkyEvCam_FPGA_Updater.sh [Enter]
```

After the command prompt returns, unplug the camera's USB plug.

The procedure for displaying the device information of SilkyEvCam is as follows.

Connect the camera and PC with a USB cable.

Please the following processing on the terminal of the PC.

\$> /usr/bin/silkyevcam_platform_info [Enter]

Make sure that the information in the red frame is the same as in this example.

```

centuryarks2@PHE-CA2: ~
File Edit View Search Terminal Help
metavision-sdk-ui-samples      2.3.0      amd64      Samples for Metavisi
on SDK UI library.
metavision-studio              2.3.0      amd64      Metavision Studio.
metavision-studio-client      2.3.0      amd64      Metavision Studio cl
ient.
metavision-studio-server      2.3.0      amd64      Metavision Studio se
rver.

-----
METAVISION SYSTEMS INFORMATION
-----

#### SYSTEMS AVAILABLE ####

# FOUND CenturyArks GEN 3.1 VGA #

Connection                    USB
FW Build Date                 Fri Oct 29 14:37:34 2021
FW Release Version            2.2.0
FW Speed                       5000
Integrator                    CenturyArks
Raw Formats                   EVT3
Sensor Info                   3.1
Serial                        00000002
System Build Date             Fri Oct 29 02:57:59 2021
System Version                4.2.0
SystemID                      40

DEFAULT BIASES
bias_diff                     299
bias_diff_off                 221
bias_diff_on                  384
bias_fo                       1477
bias_hpf                      1448
bias_pr                       1250
bias_refr                     1500

#### SYSTEM'S USB PORTS ####

USB Port type used:          3.00

centuryarks2@PHE-CA2: ~$
    
```

The update of FW / Plugin is finished.

Notifications

SilkyEvCam firmware and plug-ins may be revised in the future to improve the product. The revision status will be published on the product site, so please refer to it as appropriate.

CenturyArks product site*

<https://www.centuryarks.com/en/products/silkyevcam>

Event Based Vision Camera

SilkyEvCam

Event Based Vision Camera
CenturyArks Co., Ltd.

SilkyEvCam* powered by PROPHESEE

EvC3A
EvC3A-TK1

- ◆ Wide Dynamic Range
- ◆ Less Data
- ◆ Low Power
- ◆ Small Size
- ◆ VGA(640 x 480)
- ◆ USB Type-C™ interface



* Trademark Application Pending

✓ Event Based Vision Camera

File name : SilkyEvCamUpdaterPack_win64_20211111.zip

It includes,

- readme.txt
- SilkyEvCam plugin installer (SilkyEvCam_G31_Installer_for_win64_v2.6.0.exe)
- SilkyEvCam FW updater (SilkyEvCam_FW_Updater_for_win64_v2.2.0.zip)
- SilkyEvCam FPGA updater (SilkyEvCam_FPGA_Updater_for_win64_v4.2.0.zip)

Update procedure. Follow the step below.

Step1. SilkyEvCam plugin installer v2.6.0

Step2. SilkyEvCam FW updater v2.2.0

Step3. SilkyEvCam FPGA updater v4.2.0

Compliance items

- Perform all 3 steps.
- Please execute the process with the AC power supply connected to the PC.
- While the program is running (while writing the firmware), do not unplug the SilkyEvCam USB plug or stop the power supply.

The detailed procedure is described on the following pages.

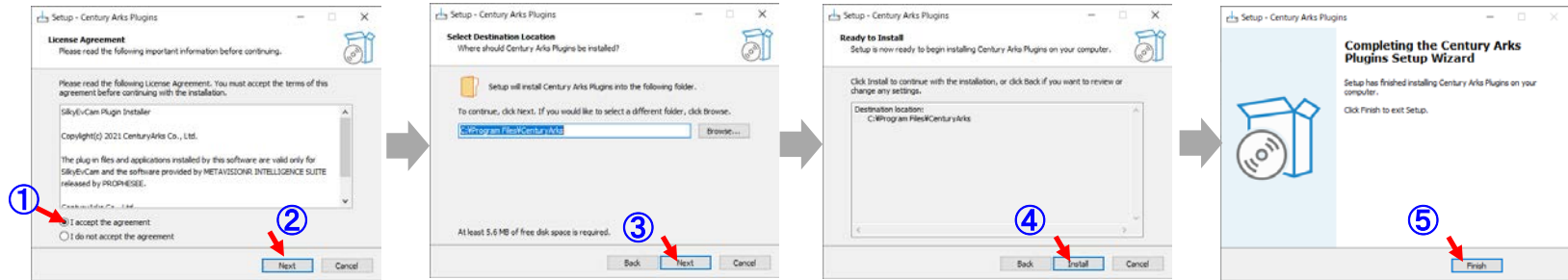
Step1. SilkyEvCam plugin installer v2.6.0

There is no need to connect the camera to your PC.

Please the following processing on the command prompt of the PC.

\$> SilkyEvCam_G31_Installer_for_win64_v2.6.0.exe [Enter]

Please click ①②③④⑤ on the pop-up window below.



Step2. SilkyEvCam FW updater v2.2.0

Decompress the SilkyEvCam_FW_Updater_for_win64_v2.2.0.zip

Please the following processing on the command prompt of the PC.

\$> cd SilkyEvCam_FW_Updater_for_win64_v2.2.0 [Enter]

Connect the camera and PC with a USB cable.

Please the following processing on the command prompt of the PC.

\$> SilkyEvCam_FW_Updater.bat [Enter]

After processing, please unplug the camera to reset it.

Step3. SilkyEvCam FPGA updater v4.2.0

Decompress the SilkyEvCam_FPGA_Updater_for_win64_v4.2.0.zip

Please the following processing on the command prompt of the PC.

\$> cd SilkyEvCam_FPGA_Updater_for_win64_v4.2.0 [Enter]

Connect the camera and PC with a USB cable.

Please the following processing on the command prompt of the PC.

\$> SilkyEvCam_FPGA_Updater.bat [Enter]

After processing, please unplug the camera to reset it.

The procedure for displaying the device information of SilkyEvCam is as follows.

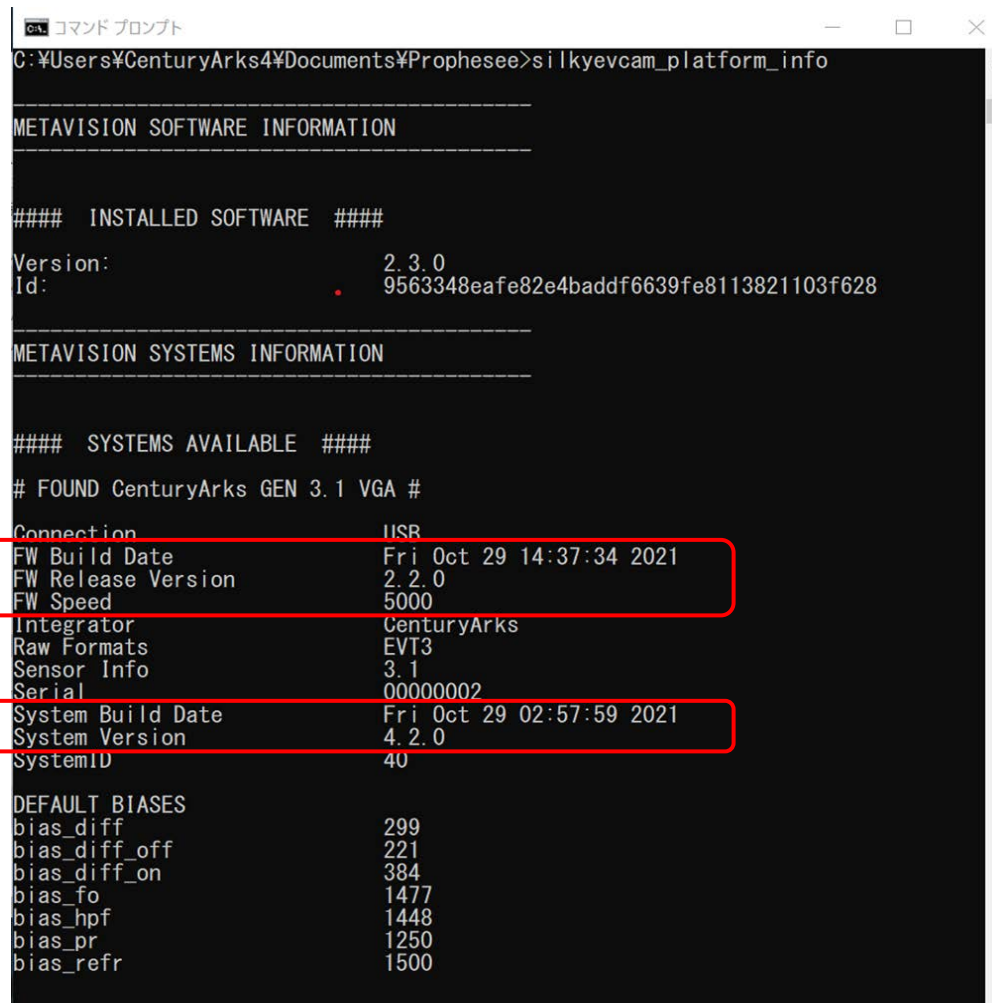
Connect the camera and PC with a USB cable.

Please the following processing on the command prompt of the PC.

\$> silkyevcam_platform_info.exe [Enter]

It is recommended to add “c:¥Program Files¥CenturyArks ¥bin” to the user environment variable Path to facilitate execution of silkyevcam_platform_info.exe.

Make sure that the information in the red frame is the same as in this example.



```

C:\Users\CenturyArks4\Documents\Prophesee>silkyevcam_platform_info

-----
METAVISION SOFTWARE INFORMATION
-----

##### INSTALLED SOFTWARE #####

Version:                2.3.0
Id:                     9563348eafe82e4baddf6639fe8113821103f628

-----
METAVISION SYSTEMS INFORMATION
-----

##### SYSTEMS AVAILABLE #####

# FOUND CenturyArks GEN 3.1 VGA #

Connection              USB
FW Build Date           Fri Oct 29 14:37:34 2021
FW Release Version      2.2.0
FW Speed                5000
Integrator              CenturyArks
Raw Formats             EVT3
Sensor Info             3.1
Serial                  00000002
System Build Date       Fri Oct 29 02:57:59 2021
System Version          4.2.0
SystemID                40

DEFAULT BIASES
bias_diff               299
bias_diff_off           221
bias_diff_on            384
bias_fo                 1477
bias_hpf                1448
bias_pr                 1250
bias_refr               1500
    
```

The update of FW / Plugin is finished.

Notifications

SilkyEvCam firmware and plug-ins may be revised in the future to improve the product. The revision status will be published on the product site, so please refer to it as appropriate.

CenturyArks product site*

<https://www.centuryarks.com/en/products/silkyevcam>

Event Based Vision Camera

SilkyEvCam

Event Based Vision Camera
CenturyArks Co., Ltd.

SilkyEvCam* powered by PROPHESEE

EvC3A
EvC3A-TK1

- ◆ Wide Dynamic Range
- ◆ Less Data
- ◆ Low Power
- ◆ Small Size
- ◆ VGA(640 x 480)
- ◆ USB Type-C™ interface



* Trademark Application Pending

✓ Event Based Vision Camera